

HYDRIVE ENGINEERING (QLD)

Unit 12 73/75 Shore St Cleveland 4163

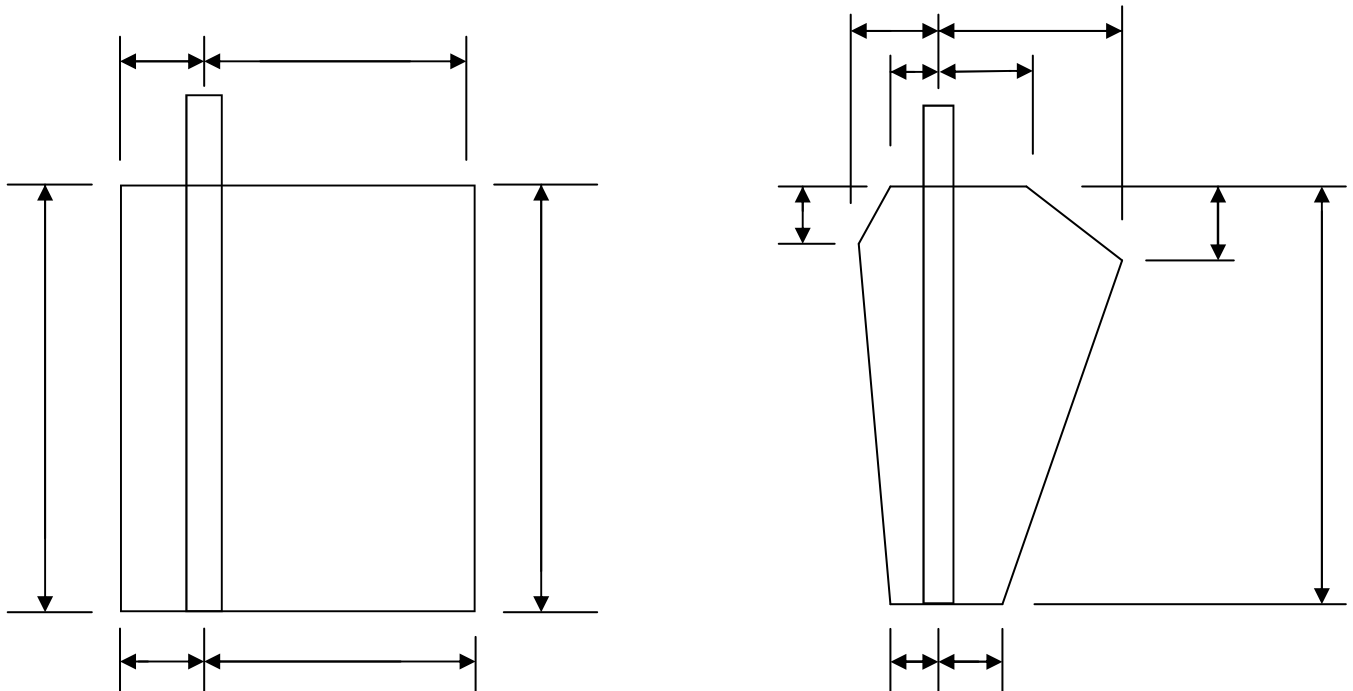
PH : 07-38216580 FAX : 07-38216582

REQUEST FOR HYDRAULIC STEERING ASSESSMENT

It is essential that ALL of the following questions be completed in order to arrive at a suitable assessment for your requirements . Do not omit any details and please supply all measurements on the relevant drawing below . If your rudder should vary from drawings below please supply drawing with measurements.

Yachts with layback rudder designs should include the degree of layback.

NAME : ADDRESS :
PHONE : FAX : DATE :
BOAT LENGTH O.A. : ON WATERLINE : BEAM : DRAFT :
VESSEL TYPE/BRAND : POWER / SAIL :
MATERIALS : IF BEING BUILT TO SURVEY - WHAT CLASS :
OUTBOARD-STERNDRIVE-INBOARD : HORSE POWER :
NUMBER OF MOTORS : BRAND :
DIAMETER & PITCH OF PROPELLER : IS THERE A NOZZLE :
NUMBER OF STEERING STATIONS REQUIRED :
NUMBERS OF RUDDERS : DO YOU INTEND TO FIT A TIE BAR :
NUMBER OF TURNS LOCK to LOCK REQUIRED :
MAXIMUM SPEED OF VESSEL : DISPLACEMENT WEIGHT :
DIAMETER OF STEERING WHEEL :



IMPORTANT NOTE : All steering assessment are supplied to our best abilities on the information supplied by you . Should the vessel have an inherent and unknown problem, the steering recommendations may have to be revised. Any revision or replacement models will have to be upgraded in accordance with any pricing variation necessary at the time.